

---

## Product Datasheet

**YB1 Antibody / Y-box-binding protein 1  
(orb639838)**

**Description**

Y-box binding protein-1 (YBX1) is the prototypic


**Species/Host**

Mouse

**Reactivity**

Human

**Conjugation**

Unconjugated

**Tested Applications**

IHC-P

IHC staining of FFPE human prostate carc...

**Immunogen**

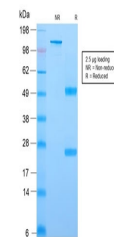
A recombinant human full-length YBX1 protein was used as the immunogen for this recombinant YB-1 antibody.

**Preservatives**

0.2 mg/ml with 0.1 mg/ml rAlbumin (US sourced), 0.05% sodium azide

**Storage**

Store the recombinant YB-1 antibody at 2-8°C (with azide) or aliquot and store at -20°C or colder (without azide).



SDS-PAGE analysis of purified, BSA-free ...

**Note**

For research use only

**Application notes**

Optimal dilution of the antibody should be determined by the researcher.

**Formula**

0.2 mg/ml with 0.1 mg/ml BSA (US sourced), 0.05% sodium azide

**Isotype**

Mouse IgG1, kappa

**Clonality**

Recombinant

**Purity**

Protein G affinity chromatography

**Uniprot ID**

**P67809**

**Hazard Information**

This recombinant YB-1 antibody is available for research use only.

**Dilution Range**

Immunohistochemistry (FFPE): 1-2ug/ml

**Expiration Date**

12 months from date of receipt.