
Product Datasheet

NRF1 Antibody / Nuclear Respiratory Factor 1 (orb639836)

Description

The NF-E2 DNA binding protein is composed of two


Species/Host

Mouse

Reactivity

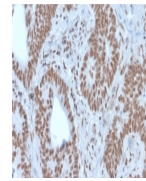
Human

Conjugation

Unconjugated

Tested Applications

IHC-P, WB



IHC staining of FFPE human colon carcinoma...

Immunogen

A recombinant full-length human protein was used as the immunogen for this NRF1 antibody.

Preservatives

0.2 mg/ml with 0.1 mg/ml rAlbumin (US sourced), 0.05% sodium azide

Storage

Store the NRF1 antibody at 2-8°C (with azide) or aliquot and store at -20°C or colder (without azide).

Note

For research use only

Application notes

Optimal dilution of the antibody should be determined by the researcher.

Formula

0.2 mg/ml with 0.1 mg/ml BSA (US sourced), 0.05% sodium azide

Isotype

Mouse IgG1, kappa

Clonality

Monoclonal

Purity

Protein G affinity chromatography

Uniprot ID

[Q16656](https://www.uniprot.org/entry/Q16656)

Hazard Information

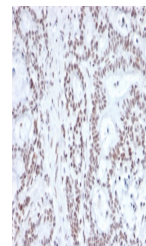
This NRF1 antibody is available for research use only.

Dilution Range

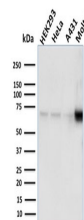
Western blot: 1-2ug/ml, Immunohistochemistry (FFPE): 1-2ug/ml

Expiration Date

12 months from date of receipt.



IHC staining of FFPE human prostate carcinoma...



Western blot testing of human samples wi...