

---

## Product Datasheet

### Nucleophosmin Antibody / NPM1 (orb639834)

**Description**

Nucleophosmin (NPM) is predominantly localized in the

**Species/Host**

Mouse

**Reactivity**

Human

**Conjugation**

Unconjugated

**Tested Applications**

FACS, IF, IHC-P, WB

**Immunogen**

A recombinant human partial protein (amion acids 185-287) was used as the immunogen for this recombinant Nucleophosmin antibody.

**Preservatives**

0.2 mg/ml with 0.1 mg/ml rAlbumin (US sourced), 0.05% sodium azide

**Storage**

Store the recombinant Nucleophosmin antibody at 2-8°C (with azide) or aliquot and store at -20°C or colder (without azide).

**Note**

For research use only

**Application notes**

Optimal dilution of the antibody should be determined by the researcher.

**Formula**

0.2 mg/ml with 0.1 mg/ml BSA (US sourced), 0.05% sodium azide

**Isotype**

Mouse IgG1, kappa

**Clonality**

Recombinant

**Purity**

Protein G affinity chromatography

**Uniprot ID**

**P06748**

**Hazard Information**

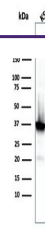
This recombinant Nucleophosmin antibody is available for research use only.

**Dilution Range**

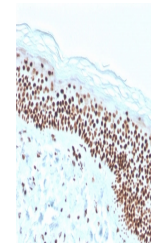
Immunohistochemistry (FFPE): 1-2ug/ml (not suitable for frozen tissue sample testing),Western blot: 1-2ug/ml,Flow cytometry: 1-2ug/million cells in 0.1ml

**Expiration Date**

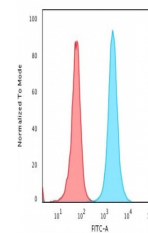
12 months from date of receipt.



Western blot testing of human K562 cell ...



IHC staining of FFPE human skin with rec...



Flow cytometry testing of PFA-fixed huma...