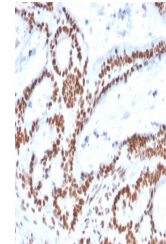


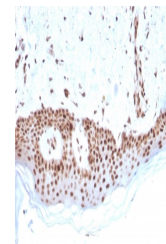
Product Datasheet

MSH2 Antibody (orb639818)

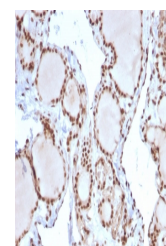
Description	Mutations in DNA mismatch repair genes are associated with hereditary nonpolyposis colorectal cancer...
Species/Host	Mouse
Reactivity	Human
Conjugation	Unconjugated
Tested Applications	FACS, IF, IHC-P, WB
Immunogen	A recombinant human partial protein (amino acids 327-427) was used as the immunogen for this MSH2 antibody.
Preservatives	0.2 mg/ml with 0.1 mg/ml rAlbumin (US sourced), 0.05% sodium azide
Storage	Store the MSH2 antibody at 2-8°C (with azide) or aliquot and store at -20°C or colder (without azide).
Note	For research use only
Application notes	Optimal dilution of the antibody should be determined by the researcher.
Formula	0.2 mg/ml with 0.1 mg/ml BSA (US sourced), 0.05% sodium azide
Isotype	Mouse IgG1, kappa
Clonality	Monoclonal
Purity	Protein G affinity chromatography
Uniprot ID	P43246
Hazard Information	This MSH2 antibody is available for research use only.
Dilution Range	Flow cytometry: 1-2ug/million cells in 0.1ml, Western blot: 1-2ug/ml, Immunohistochemistry (FFPE): 1-2ug/ml, Immunofluorescence: 1-2ug/ml
Expiration Date	12 months from date of receipt.



IHC staining of FFPE human colon carcinoma...



IHC staining of FFPE human basal cell carcinoma...



IHC staining of FFPE human thyroid carcinoma...