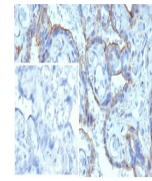


## Product Datasheet

### **MMP3 Antibody / Matrix Metalloproteinase 3 (orb639812)**

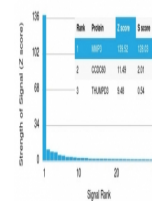
**Description**

The matrix metalloproteinases (MMP) are a family of

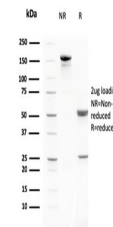


IHC staining of FFPE human placenta with...

Human Protein Microarray Specificity Validation



Analysis of HuProt (TM) microarray conta...



SDS-PAGE analysis of purified, BSA-free ...

**Species/Host**

Mouse

**Reactivity**

Human

**Conjugation**

Unconjugated

**Tested Applications**

ELISA, IHC-P

**Immunogen**

A recombinant full length human protein was used as the immunogen for this MMP3 antibody.

**Preservatives**

0.2 mg/ml with 0.1 mg/ml rAlbumin (US sourced), 0.05% sodium azide

**Storage**

Store the MMP3 antibody at 2-8°C (with azide) or aliquot and store at -20°C or colder (without azide).

**Note**

For research use only

**Application notes**

Optimal dilution of the antibody should be determined by the researcher.

**Formula**

0.2 mg/ml with 0.1 mg/ml BSA (US sourced), 0.05% sodium azide

**Isotype**

Mouse IgG2c, kappa

**Clonality**

Monoclonal

**Purity**

Protein G affinity chromatography

**Uniprot ID**

[P08254](#)

**Hazard Information**

This MMP3 antibody is available for research use only.

**Dilution Range**

ELISA (order BSA-free format for coating), Immunohistochemistry (FFPE): 1-2ug/ml

**Expiration Date**

12 months from date of receipt.