
Product Datasheet

MDH1 Antibody / Malate dehydrogenase 1 (orb639803)

Description

Malate dehydrogenase catalyzes the reversible



NAD...

Species/Host Mouse

Reactivity Human

Conjugation Unconjugated

Tested Applications WB

Immunogen A recombinant human full-length MDH1 protein was used as the immunogen for this MDH1 antibody.

Preservatives 0.2 mg/ml with 0.1 mg/ml rAlbumin (US sourced), 0.05% sodium azide

Storage Store the MDH1 antibody at 2-8°C (with azide) or aliquot and store at -20°C or colder (without azide).

Note For research use only

Application notes Optimal dilution of the antibody should be determined by the researcher.

Formula 0.2 mg/ml with 0.1 mg/ml BSA (US sourced), 0.05% sodium azide

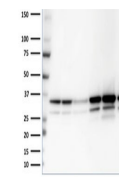
Isotype Mouse IgG2a, kappa

Clonality Monoclonal

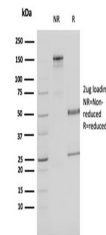
Purity Protein G affinity chromatography

Uniprot ID [P40925](#)
Hazard Information This MDH1 antibody is available for research use only.

Dilution Range Western blot: 1-2ug/ml

Expiration Date 12 months from date of receipt.


Western blot testing of human samples wi...



SDS-PAGE analysis of purified, BSA-free ...