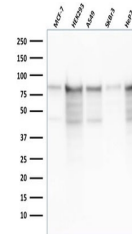


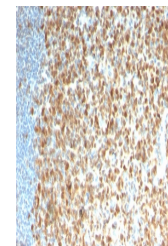
Product Datasheet

MCM7 Antibody (orb639802)

Description	MCM7 is one of the highly conserved mini-chromosome maintenance proteins (MCM) that is essential for...
Species/Host	Mouse
Reactivity	Human
Conjugation	Unconjugated
Tested Applications	IHC-P, WB
Immunogen	A human partial protein corresponding to amino acids 195-319 was used as the immunogen for the recombinant MCM7 antibody.
Preservatives	0.2 mg/ml with 0.1 mg/ml rAlbumin (US sourced), 0.05% sodium azide
Storage	Store the recombinant MCM7 antibody at 2-8°C (with azide) or aliquot and store at -20°C or colder (without azide).
Note	For research use only
Application notes	Optimal dilution of the antibody should be determined by the researcher.
Formula	0.2 mg/ml with 0.1 mg/ml BSA (US sourced), 0.05% sodium azide
Isotype	Mouse IgG1, kappa
Clonality	Recombinant
Purity	Protein G affinity chromatography
Uniprot ID	P33993
Hazard Information	This recombinant MCM7 antibody is available for research use only.
Dilution Range	Western blot: 1-2ug/ml, Immunohistochemistry (FFPE): 1-2ug/ml
Expiration Date	12 months from date of receipt.

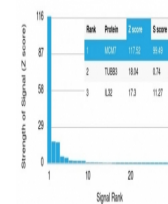


Western blot testing of human samples wi...



IHC testing of FFPE human tonsil with re...

Human Protein Microarray Specificity Validation



Protein array validation of the MCM7 ant...