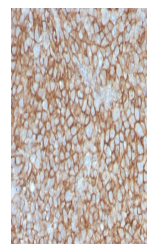


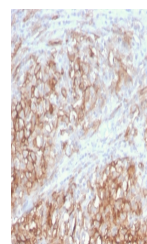
Product Datasheet

CD146 Antibody / MCAM / MUC18 (orb639799)

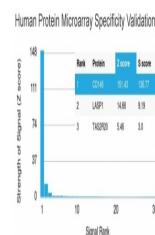
Description	The human Mel-CAM gene maps to chromosome 11q23 and encodes a trans-membrane glycoprotein, also desi...
Species/Host	Mouse
Reactivity	Human
Conjugation	Unconjugated
Tested Applications	IHC-P
Immunogen	A recombinant human partial protein (amino acids 226-374) was used as the immunogen for the MCAM antibody.
Preservatives	0.2 mg/ml with 0.1 mg/ml rAlbumin (US sourced), 0.05% sodium azide
Storage	Store the MCAM antibody at 2-8°C (with azide) or aliquot and store at -20°C or colder (without azide).
Note	For research use only
Application notes	Optimal dilution of the antibody should be determined by the researcher.
Formula	0.2 mg/ml with 0.1 mg/ml BSA (US sourced), 0.05% sodium azide
Isotype	Mouse IgG1, kappa
Clonality	Monoclonal
Purity	Protein G affinity chromatography
Uniprot ID	P43121
Hazard Information	This MCAM antibody is available for research use only.
Dilution Range	Immunohistochemistry (FFPE): 1-2ug/ml
Expiration Date	12 months from date of receipt.



IHC staining of FFPE human melanoma with...



IHC staining of FFPE human melanoma with...



Analysis of HuProt (TM) microarray conta...