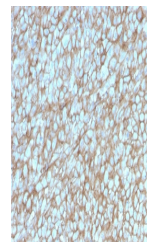


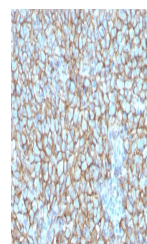
Product Datasheet

CD146 Antibody / MCAM / MUC18 (orb639798)

Description	The human Mel-CAM gene maps to chromosome 11q23 and encodes a trans-membrane glycoprotein, also desi...
Species/Host	Mouse
Reactivity	Human
Conjugation	Unconjugated
Tested Applications	IHC-P
Immunogen	A recombinant human partial protein (amino acids 226-374) was used as the immunogen for the MCAM antibody.
Preservatives	0.2 mg/ml with 0.1 mg/ml rAlbumin (US sourced), 0.05% sodium azide
Storage	Store the MCAM antibody at 2-8°C (with azide) or aliquot and store at -20°C or colder (without azide).
Note	For research use only
Application notes	Optimal dilution of the antibody should be determined by the researcher.
Formula	0.2 mg/ml with 0.1 mg/ml BSA (US sourced), 0.05% sodium azide
Isotype	Mouse IgG2b, kappa
Clonality	Monoclonal
Purity	Protein G affinity chromatography
Uniprot ID	P43121
Hazard Information	This MCAM antibody is available for research use only.
Dilution Range	Immunohistochemistry (FFPE): 1-2ug/ml
Expiration Date	12 months from date of receipt.

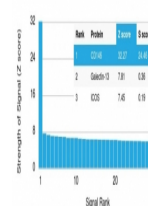


IHC staining of FFPE human melanoma with...



IHC staining of FFPE human melanoma with...

Human Protein Microarray Specificity Validation



Analysis of HuProt (TM) microarray conta...