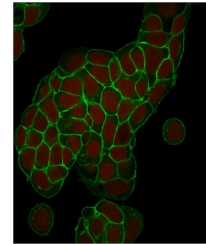


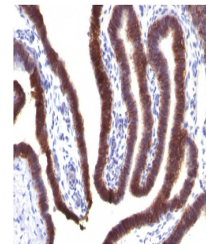
## Product Datasheet

### EpCAM Antibody (orb639787)

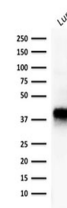
<b>Description</b>	EGP40 is a 40-43kDa transmembrane epithelial glycoprotein, also identified as epithelial specific an...
<b>Species/Host</b>	Mouse
<b>Reactivity</b>	Canine, Feline, Human
<b>Conjugation</b>	Unconjugated
<b>Tested Applications</b>	IF, IHC-P, WB
<b>Immunogen</b>	A human partial recombinant protein corresponding to amino acids 100-224 (extracellular domain) was used as the immunogen for the EpCAM antibody.
<b>Preservatives</b>	0.2 mg/ml with 0.1 mg/ml rAlbumin (US sourced), 0.05% sodium azide
<b>Storage</b>	Store the EpCAM antibody at 2-8°C (with azide) or aliquot and store at -20°C or colder (without azide).
<b>Note</b>	For research use only
<b>Application notes</b>	Optimal dilution of the antibody should be determined by the researcher.
<b>Formula</b>	0.2 mg/ml with 0.1 mg/ml BSA (US sourced), 0.05% sodium azide
<b>Isotype</b>	Mouse IgG, kappa
<b>Clonality</b>	Monoclonal
<b>Purity</b>	Protein G affinity chromatography
<b>Uniprot ID</b>	<b>P16422</b>
<b>Hazard Information</b>	This EpCAM antibody is available for research use only.
<b>Dilution Range</b>	Western blot: 1-2ug/ml, Immunofluorescence: 1-3ug/ml, Immunohistochemistry (FFPE): 1-2ug/ml
<b>Expiration Date</b>	12 months from date of receipt.



Immunofluorescent staining of human MCF7...



IHC staining of FFPE human fallopian tub...



Western blot testing of human lung tissu...