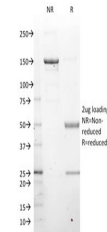


Product Datasheet

LMO2 Antibody / Rhombotin 2 (orb639783)

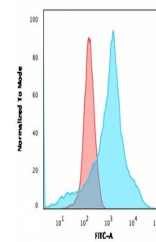
Description	The LMO2 protein has a central and crucial role in hematopoietic development and is highly conserved...
Species/Host	Mouse
Reactivity	Human
Conjugation	Unconjugated
Tested Applications	FACS, IHC-P, WB
Immunogen	A recombinant human partial protein (amino acids 23-140) was used as the immunogen for the LMO2 antibody.
Preservatives	0.2 mg/ml with 0.1 mg/ml rAlbumin (US sourced), 0.05% sodium azide
Storage	Store the LMO2 antibody at 2-8°C (with azide) or aliquot and store at -20°C or colder (without azide).
Note	For research use only
Application notes	Optimal dilution of the antibody should be determined by the researcher.
Formula	0.2 mg/ml with 0.1 mg/ml BSA (US sourced), 0.05% sodium azide
Isotype	Mouse IgG2b, kappa
Clonality	Monoclonal
Purity	Protein G affinity chromatography
Uniprot ID	P25791
Hazard Information	This LMO2 antibody is available for research use only.
Dilution Range	Flow cytometry: 1-2ug/million cells in 0.1ml, Western blot: 1-2ug/ml, Immunohistochemistry (FFPE): 1-2ug/ml
Expiration Date	12 months from date of receipt.



SDS-PAGE analysis of purified, BSA-free ...



Western blot testing of human Ramos cell...



Flow cytometry testing of permeabilized ...