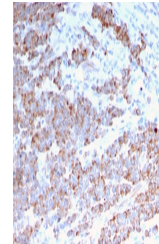


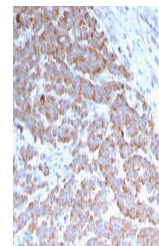
## Product Datasheet

# Cytokeratin 18 Antibody (orb639780)

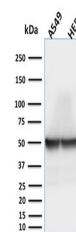
<b>Description</b>	This MAb reacts with a wide variety of simple epithelia. It does not react with stratified squamous ...
<b>Species/Host</b>	Mouse
<b>Reactivity</b>	Human, Mouse, Rat
<b>Conjugation</b>	Unconjugated
<b>Tested Applications</b>	IF, IHC-P, WB
<b>Immunogen</b>	Recombinant human KRT18 protein was used as the immunogen for the recombinant Cytokeratin 18 antibody.
<b>Preservatives</b>	0.2 mg/ml with 0.1 mg/ml rAlbumin (US sourced), 0.05% sodium azide
<b>Storage</b>	Store the recombinant Cytokeratin 18 antibody at 2-8°C (with azide) or aliquot and store at -20°C or colder (without azide).
<b>Note</b>	For research use only
<b>Application notes</b>	Optimal dilution of the antibody should be determined by the researcher.
<b>Formula</b>	0.2 mg/ml with 0.1 mg/ml BSA (US sourced), 0.05% sodium azide
<b>Isotype</b>	Mouse IgG1, kappa
<b>Clonality</b>	Recombinant
<b>Purity</b>	Protein G affinity chromatography
<b>Hazard Information</b>	This recombinant Cytokeratin 18 antibody is available for research use only.
<b>Dilution Range</b>	Immunofluorescence: 1-2ug/ml,Western blot: 1-2ug/ml,Immunohistochemistry (FFPE): 1-2ug/ml
<b>Expiration Date</b>	12 months from date of receipt.



IHC staining of FFPE human colon carcinoma...



IHC staining of FFPE human colon carcinoma...



Western blot testing of human samples wi...