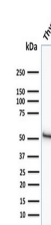


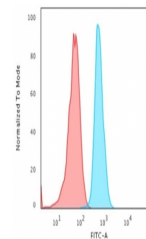
Product Datasheet

KRT15 Antibody / Cytokeratin 15 (orb639778)

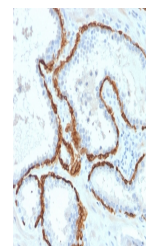
Description	Keratin 15 is a type I keratin which is expressed only in basal keratinocytes in stratified epitheli...
Species/Host	Mouse
Reactivity	Human
Conjugation	Unconjugated
Tested Applications	FACS, IHC-P, WB
Immunogen	Recombinant human KRT15 protein was used as the immunogen for the CK15 antibody.
Preservatives	0.2 mg/ml with 0.1 mg/ml rAlbumin (US sourced), 0.05% sodium azide
Storage	Store the Keratin 15 antibody at 2-8°C (with azide) or aliquot and store at -20°C or colder (without azide).
Note	For research use only
Application notes	Optimal dilution of the antibody should be determined by the researcher.
Formula	0.2 mg/ml with 0.1 mg/ml BSA (US sourced), 0.05% sodium azide
Isotype	Mouse IgG2b, kappa
Clonality	Monoclonal
Purity	Protein G affinity chromatography
Uniprot ID	P19012
Hazard Information	This Keratin 15 antibody is available for research use only.
Dilution Range	Flow cytometry: 1-2ug/million cells,Western blot: 1-2ug/ml,Immunohistochemistry (FFPE): 1-2ug/ml
Expiration Date	12 months from date of receipt.



Western blot testing of human thymus tis...



Flow cytometry testing of PFA-fixed huma...



IHC staining of FFPE human prostate carc...