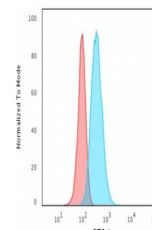


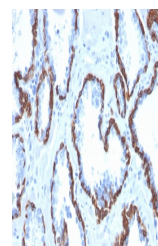
Product Datasheet

Cytokeratin 13 Antibody / KRT13 (orb639774)

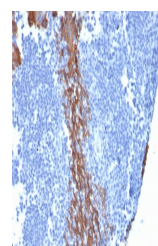
Description	Cytokeratin 13 (KRT13) is the major acidic keratin, which together with KRT4, its basic partner, is ...
Species/Host	Mouse
Reactivity	Human
Conjugation	Unconjugated
Tested Applications	IF, IHC-P
Immunogen	A recombinant full-length human KRT13 protein was used as the immunogen for this Cytokeratin 13 antibody.
Preservatives	0.2 mg/ml with 0.1 mg/ml rAlbumin (US sourced), 0.05% sodium azide
Storage	Store the Cytokeratin 13 antibody at 2-8°C (with azide) or aliquot and store at -20°C or colder (without azide).
Note	For research use only
Application notes	Optimal dilution of the antibody should be determined by the researcher.
Formula	0.2 mg/ml with 0.1 mg/ml BSA (US sourced), 0.05% sodium azide
Isotype	Mouse IgG1, kappa
Clonality	Monoclonal
Purity	Protein G affinity chromatography
Hazard Information	This Cytokeratin 13 antibody is available for research use only.
Dilution Range	Immunofluorescence: 1-2ug/ml, Immunohistochemistry (FFPE): 1-2ug/ml
Expiration Date	12 months from date of receipt.



Flow cytometry testing of permeabilized ...



IHC staining of FFPE human prostate carc...



IHC staining of FFPE human tonsil with C...