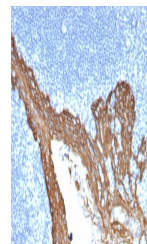


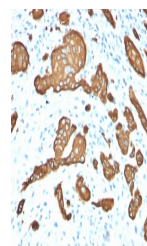
Product Datasheet

KRT8 Antibody / Cytokeratin 8 (orb639772)

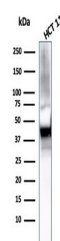
Description	Cytokeratin 8 (CK8) belongs to the type II (or B or basic) subfamily of high molecular weight cytoke...
Species/Host	Mouse
Reactivity	Human
Conjugation	Unconjugated
Tested Applications	IHC-P, WB
Immunogen	A recombinant full-length human KRT8 protein was used as the immunogen for this Cytokeratin 8 antibody.
Preservatives	0.2 mg/ml with 0.1 mg/ml rAlbumin (US sourced), 0.05% sodium azide
Storage	Store the Cytokeratin 8 antibody at 2-8°C (with azide) or aliquot and store at -20°C or colder (without azide).
Note	For research use only
Application notes	Optimal dilution of the antibody should be determined by the researcher.
Formula	0.2 mg/ml with 0.1 mg/ml BSA (US sourced), 0.05% sodium azide
Isotype	Mouse IgG1, kappa
Clonality	Monoclonal
Purity	Protein G affinity chromatography
Hazard Information	This Cytokeratin 8 antibody is available for research use only.
Dilution Range	Immunohistochemistry (FFPE): 0.5-1ug/ml
Expiration Date	12 months from date of receipt.



IHC staining of FFPE human prostate with...



IHC staining of FFPE human skin basal ce...



Western blot testing of human HCT116 cel...