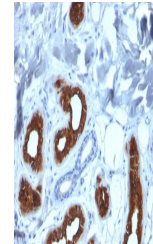


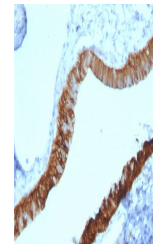
## Product Datasheet

# Cytokeratin 3 Antibody / KRT3 (orb639767)

|                            |   |
|----------------------------|---|
| <b>Description</b>         | The protein encoded by this gene is a member of the keratin gene family. The type II cytokeratins co...         |
| <b>Species/Host</b>        | Mouse   |
| <b>Reactivity</b>          | Human   |
| <b>Conjugation</b>         | Unconjugated  |
| <b>Tested Applications</b> | IHC-P   |
| <b>Immunogen</b>           | A recombinant full-length human protein was used as the immunogen for this Cytokeratin 3 antibody.              |
| <b>Preservatives</b>       | 0.2 mg/ml with 0.1 mg/ml rAlbumin (US sourced), 0.05% sodium azide  |
| <b>Storage</b>             | Store the Cytokeratin 3 antibody at 2-8°C (with azide) or aliquot and store at -20°C or colder (without azide). |
| <b>Note</b>                | For research use only   |
| <b>Application notes</b>   | Optimal dilution of the antibody should be determined by the researcher.  |
| <b>Formula</b>             | 0.2 mg/ml with 0.1 mg/ml BSA (US sourced), 0.05% sodium azide   |
| <b>Isotype</b>             | Mouse IgG1, kappa   |
| <b>Clonality</b>           | Monoclonal  |
| <b>Purity</b>              | Protein G affinity chromatography   |
| <b>Hazard Information</b>  | This Cytokeratin 3 antibody is available for research use only.   |
| <b>Dilution Range</b>      | Immunohistochemistry (FFPE): 1-2ug/ml   |
| <b>Expiration Date</b>     | 12 months from date of receipt.   |

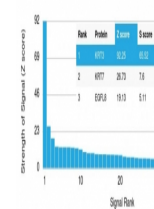


IHC staining of FFPE human skin with Cyt...



IHC staining of FFPE human ovary with Cy...

Human Protein Microarray Specificity (Validated)



Analysis of HuProt (TM) microarray conta...