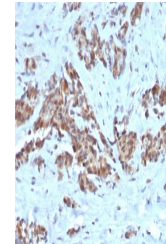


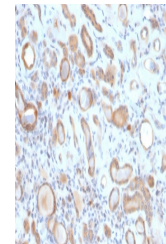
Product Datasheet

ARF1 Antibody (orb639760)

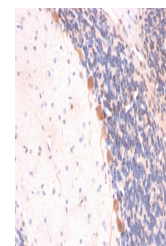
Description	The ADP-ribosylation factor (ARF) family comprises a group of structurally and functionally conserve...
Species/Host	Mouse
Reactivity	Human, Mouse, Rat
Conjugation	Unconjugated
Tested Applications	IHC-P
Immunogen	A recombinant full-length human ARF1 protein was used as the immunogen for this ARF1 antibody.
Preservatives	0.2 mg/ml with 0.1 mg/ml rAlbumin (US sourced), 0.05% sodium azide
Storage	Store the ARF1 antibody at 2-8°C (with azide) or aliquot and store at -20°C or colder (without azide).
Note	For research use only
Application notes	Optimal dilution of the antibody should be determined by the researcher.
Formula	0.2 mg/ml with 0.1 mg/ml BSA (US sourced), 0.05% sodium azide
Isotype	Mouse IgG2a, kappa
Clonality	Monoclonal
Purity	Protein G affinity chromatography
Uniprot ID	P84077
Hazard Information	This ARF1 antibody is available for research use only.
Dilution Range	Immunohistochemistry (FFPE): 1-2ug/ml
Expiration Date	12 months from date of receipt.



IHC staining of FFPE human breast with A...



IHC staining of FFPE human kidney with A...



IHC staining of FFPE rat brain with ARF1...