
Product Datasheet

**Integrin beta 3 Antibody / ITGB3 / CD61
(orb639753)**

Description

Reacts with human integrin beta3 (GPIIIa, vitronectin


Species/Host

Mouse

Reactivity

Human

Conjugation

Unconjugated

Tested Applications

IHC-P

IHC testing of FFPE human spleen with IT...

Immunogen

A recombinant human partial protein (amino acids 385-490) was used as the immunogen for this ITGB3 antibody.

Preservatives

0.2 mg/ml with 0.1 mg/ml rAlbumin (US sourced), 0.05% sodium azide

Storage

Store the ITGB3 antibody at 2-8°C (with azide) or aliquot and store at -20°C or colder (without azide).

Note

For research use only

Application notes

Optimal dilution of the antibody should be determined by the researcher.

Formula

0.2 mg/ml with 0.1 mg/ml BSA (US sourced), 0.05% sodium azide

Isotype

Mouse IgG2b, kappa

Clonality

Monoclonal

Purity

Protein G affinity chromatography

Uniprot ID
P05106
Hazard Information

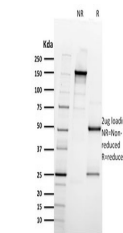
This ITGB3 antibody is available for research use only.

Dilution Range

Immunohistochemistry (FFPE): 1-2ug/ml

Expiration Date

12 months from date of receipt.



SDS-PAGE analysis of purified, BSA-free ...