

---

## Product Datasheet

**Integrin beta 3 Antibody / ITGB3 / CD61  
(orb639752)**

**Description**

Reacts with human integrin beta3 (GPIIIa,

the I...

**Species/Host**

Mouse

**Reactivity**

Human

**Conjugation**

Unconjugated

**Tested Applications**

IHC-P

**Immunogen**

A recombinant human partial protein (amino acids 385-490) was used as the immunogen for this ITGB3 antibody.

**Preservatives**

0.2 mg/ml with 0.1 mg/ml rAlbumin (US sourced), 0.05% sodium azide

**Storage**

Store the ITGB3 antibody at 2-8°C (with azide) or aliquot and store at -20°C or colder (without azide).

**Note**

For research use only

**Application notes**

Optimal dilution of the antibody should be determined by the researcher.

**Formula**

0.2 mg/ml with 0.1 mg/ml BSA (US sourced), 0.05% sodium azide

**Isotype**

Mouse IgG2b, kappa

**Clonality**

Monoclonal

**Purity**

Protein G affinity chromatography

**Uniprot ID**
**P05106**
**Hazard Information**

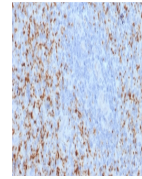
This ITGB3 antibody is available for research use only.

**Dilution Range**

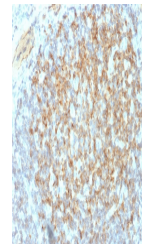
Immunohistochemistry (FFPE): 1-2ug/ml

**Expiration Date**

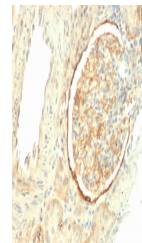
12 months from date of receipt.



IHC testing of FFPE human spleen with IT...



IHC testing of FFPE human tonsil with IT...



IHC testing of FFPE human kidney with IT...