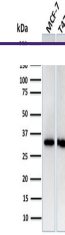

Product Datasheet

RPA32 Antibody / Replication Protein A2 (orb639746)

Description

Recognizes a protein of 34kDa, identified as a



Western blot testing of human MCF7 and T...

	as...
Species/Host	Rabbit
Reactivity	Human
Conjugation	Unconjugated
Tested Applications	WB
Immunogen	A recombinant human full-length Replication protein A2 protein was used as the immunogen for this recombinant RPA32 antibody.
Preservatives	0.2 mg/ml with 0.1 mg/ml rAlbumin (US sourced), 0.05% sodium azide
Storage	Store the recombinant RPA32 antibody at 2-8°C (with azide) or aliquot and store at -20°C or colder (without azide).
Note	For research use only
Application notes	Optimal dilution of the antibody should be determined by the researcher.
Formula	0.2 mg/ml with 0.1 mg/ml BSA (US sourced), 0.05% sodium azide
Isotype	Rabbit IgG, kappa
Clonality	Recombinant
Purity	Protein A affinity chromatography
Uniprot ID	P15927
Hazard Information	This recombinant RPA32 antibody is available for research use only.
Dilution Range	Western blot: 1-2ug/ml
Expiration Date	12 months from date of receipt.