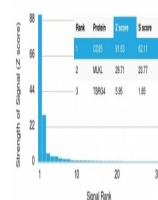


Product Datasheet

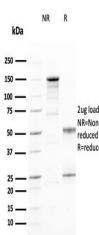
CD25 Antibody / IL2RA (orb639741)

Description	Recognizes a protein of 55kDa, identified as CD25. It is expressed on activated T- and B-cells and a...
Species/Host	Mouse
Reactivity	Human
Conjugation	Unconjugated
Tested Applications	ELISA
Immunogen	A recombinant human partial protein (amino acids 42-183) was used as the immunogen for this CD25 antibody.
Preservatives	0.2 mg/ml with 0.1 mg/ml rAlbumin (US sourced), 0.05% sodium azide
Storage	Store the CD25 antibody at 2-8°C (with azide) or aliquot and store at -20°C or colder (without azide).
Note	For research use only
Application notes	Optimal dilution of the antibody should be determined by the researcher.
Formula	0.2 mg/ml with 0.1 mg/ml BSA (US sourced), 0.05% sodium azide
Isotype	Mouse IgG2b, kappa
Clonality	Monoclonal
Purity	Protein G affinity chromatography
Uniprot ID	P01589
Hazard Information	This CD25 antibody is available for research use only.
Dilution Range	ELISA (order BSA-free format for coating)
Expiration Date	12 months from date of receipt.

Human Protein Microarray Specificity Validation



Analysis of HuProt (TM) microarray conta...



SDS-PAGE analysis of purified, BSA-free ...