

---

## Product Datasheet

### Lambda Light Chain Antibody / Lambda Antibody (orb639739)

**Description**

This MAb is specific to lambda light chain of


**Species/Host**

Rabbit

**Reactivity**

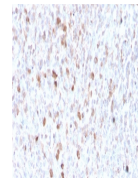
Human

**Conjugation**

Unconjugated

**Tested Applications**

IHC-P



IHC staining of FFPE human spleen with r...

**Immunogen**

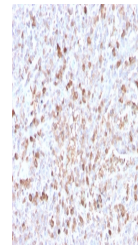
Recombinant full-length human IGL protein was used as the immunogen for the recombinant Lambda antibody.

**Preservatives**

0.2 mg/ml with 0.1 mg/ml rAlbumin (US sourced), 0.05% sodium azide

**Storage**

Store the recombinant Lambda antibody at 2-8°C (with azide) or aliquot and store at -20°C or colder (without azide).


**Note**

For research use only

**Application notes**

Optimal dilution of the antibody should be determined by the researcher.

IHC staining of FFPE human spleen with r...

**Formula**

0.2 mg/ml with 0.1 mg/ml BSA (US sourced), 0.05% sodium azide

**Isotype**

Rabbit IgG

**Clonality**

Recombinant

**Purity**

Protein A affinity chromatography

**Uniprot ID**

**P01701, P01842**

**Hazard Information**

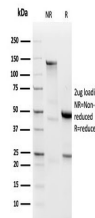
This recombinant Lambda antibody is available for research use only.

**Dilution Range**

Immunohistochemistry (FFPE): 0.1-0.2ug/ml

**Expiration Date**

12 months from date of receipt.



SDS-PAGE analysis of purified, BSA-free ...