
Product Datasheet

IgM Heavy Chain Antibody (orb639730)

Description

Recognizes a protein of 75kDa, identified as mu heavy


Species/Host

Mouse

Reactivity

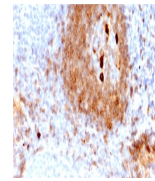
Human

Conjugation

Unconjugated

Tested Applications

FACS, IF, IHC-P



IHC staining of FFPE human tonsil with r...

Immunogen

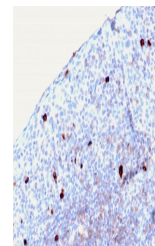
Heavy chain of human IgM was used as the immunogen for the recombinant IgM Heavy Chain antibody.

Preservatives

0.2 mg/ml with 0.1 mg/ml rAlbumin (US sourced), 0.05% sodium azide

Storage

Store the recombinant IgM Heavy Chain antibody at 2-8°C (with azide) or aliquot and store at -20°C or colder (without azide).



IHC staining of FFPE human tonsil with r...

Note

For research use only

Application notes

Optimal dilution of the antibody should be determined by the researcher.

Formula

0.2 mg/ml with 0.1 mg/ml BSA (US sourced), 0.05% sodium azide

Isotype

Mouse IgG1, kappa

Clonality

Recombinant

Purity

Protein G affinity chromatography

Uniprot ID

P01871

Hazard Information

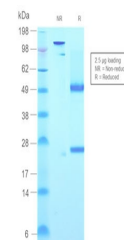
This recombinant IgM Heavy Chain antibody is available for research use only.

Dilution Range

Flow cytometry: 1-2ug/million cells in 0.1ml, Immunofluorescence: 1-2ug/ml, Immunohistochemistry (FFPE): 1-2ug/ml

Expiration Date

12 months from date of receipt.



SDS-PAGE analysis of purified, BSA-free ...