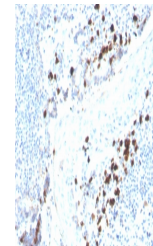


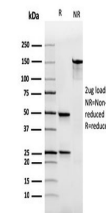
Product Datasheet

IgA Heavy Chain Antibody (orb639722)

Description	This MAb is specific to heavy chain of IgA and shows minimal cross-reaction with heavy chains of oth...
Species/Host	Mouse
Reactivity	Human
Conjugation	Unconjugated
Tested Applications	IHC-P
Immunogen	Full length recombinant human IGHA protein was used as the immunogen for the human recombinant IgA Heavy Chain antibody.
Preservatives	0.2 mg/ml with 0.1 mg/ml rAlbumin (US sourced), 0.05% sodium azide
Storage	Store the recombinant IgA Heavy Chain antibody at 2-8°C (with azide) or aliquot and store at -20°C or colder (without azide).
Note	For research use only
Application notes	Optimal dilution of the antibody should be determined by the researcher.
Formula	0.2 mg/ml with 0.1 mg/ml BSA (US sourced), 0.05% sodium azide
Isotype	Mouse IgG1, kappa
Clonality	Recombinant
Purity	Protein G affinity chromatography
Uniprot ID	P01876
Hazard Information	This recombinant IgA Heavy Chain antibody is available for research use only.
Dilution Range	Immunohistochemistry (FFPE): 1-2ug/ml
Expiration Date	12 months from date of receipt.



IHC staining of FFPE human tonsil with h...



SDS-PAGE analysis of purified, BSA-free ...