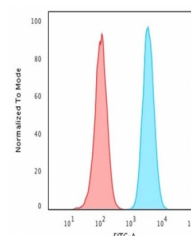


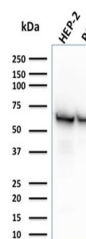
## Product Datasheet

### HSP60 Antibody (orb639714)

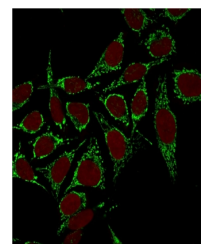
<b>Description</b>	The heat shock proteins (HSPs) comprise a group of highly conserved, abundantly expressed proteins w...
<b>Species/Host</b>	Mouse
<b>Reactivity</b>	Human
<b>Conjugation</b>	Unconjugated
<b>Tested Applications</b>	FACS, IF, IHC-P, WB
<b>Immunogen</b>	Full length recombinant human protein was used as the immunogen for the HSP60 antibody.
<b>Preservatives</b>	0.2 mg/ml with 0.1 mg/ml rAlbumin (US sourced), 0.05% sodium azide
<b>Storage</b>	Store the HSP60 antibody at 2-8°C (with azide) or aliquot and store at -20°C or colder (without azide).
<b>Note</b>	For research use only
<b>Application notes</b>	Optimal dilution of the antibody should be determined by the researcher.
<b>Formula</b>	0.2 mg/ml with 0.1 mg/ml BSA (US sourced), 0.05% sodium azide
<b>Isotype</b>	Mouse IgG1, kappa
<b>Clonality</b>	Monoclonal
<b>Purity</b>	Protein G affinity chromatography
<b>Uniprot ID</b>	<b>P10809</b>
<b>Hazard Information</b>	This HSP60 antibody is available for research use only.
<b>Dilution Range</b>	Flow cytometry: 1-2ug/million cells in 0.1ml, Immunofluorescence: 1-2ug/ml, Western blot: 1-2ug/ml, Immunohistochemistry (FFPE): 1-2ug/ml
<b>Expiration Date</b>	12 months from date of receipt.



Flow testing of  
PFA-fixed human  
HeLa cel...



Western blot  
testing of human  
HEP-2 and ...



Immunofluorescent  
staining of fixed  
huma...