
Product Datasheet

**GPI Antibody / Glucose-6-phosphate isomerase
(orb639688)**

Description

In addition to its role as a glycolytic enzyme,



cyto...

Species/Host

Mouse

Reactivity

Human

Conjugation

Unconjugated

Tested Applications

IF, IHC-P, WB

IHC staining of FFPE human breast carcin...

Immunogen

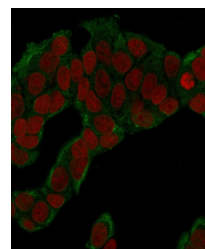
A recombinant human full-length protein was used as the immunogen for the Glucose 6-Phosphate Isomerase antibody.

Preservatives

0.2 mg/ml with 0.1 mg/ml rAlbumin (US sourced), 0.05% sodium azide

Storage

Store the Glucose 6-Phosphate Isomerase antibody at 2-8°C (with azide) or aliquot and store at -20°C or colder (without azide).



Immunofluorescence staining of fixed hum...

Note

For research use only

Application notes

Optimal dilution of the antibody should be determined by the researcher.

Formula

0.2 mg/ml with 0.1 mg/ml BSA (US sourced), 0.05% sodium azide

Isotype

Mouse IgG2a, kappa

Clonality

Monoclonal

Purity

Protein G affinity chromatography

Uniprot ID

P06744

Hazard Information

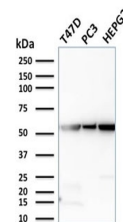
This Glucose 6-Phosphate Isomerase antibody is available for research use only.

Dilution Range

Western blot: 1-2ug/ml, Immunofluorescence: 1-2ug/ml, Immunohistochemistry (FFPE): 1-2ug/ml

Expiration Date

12 months from date of receipt.



Western blot testing of human T-47D, PC3...