
Product Datasheet

FTL Antibody / Ferritin light chain (orb639670)

Description

Mammalian ferritins consist of 24 subunits made up of


Species/Host

Mouse

Reactivity

Human

Conjugation

Unconjugated

Tested Applications

IHC-P, WB

IHC staining of FFPE human pancreas with...

Immunogen

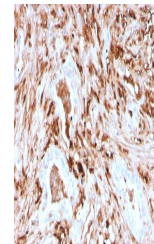
A human recombinant partial protein (amino acids 38-165) was used as the immunogen for the recombinant FTL antibody.

Preservatives

0.2 mg/ml with 0.1 mg/ml rAlbumin (US sourced), 0.05% sodium azide

Storage

Store the recombinant FTL antibody at 2-8°C (with azide) or aliquot and store at -20°C or colder (without azide).


Note

For research use only

Application notes

Optimal dilution of the antibody should be determined by the researcher.

IHC staining of FFPE human pancreas with...

Formula

0.2 mg/ml with 0.1 mg/ml BSA (US sourced), 0.05% sodium azide

Isotype

Mouse IgG1, kappa

Clonality

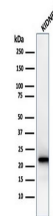
Recombinant

Purity

Protein G affinity chromatography

Uniprot ID

P02792


Hazard Information

This recombinant FTL antibody is available for research use only.

Western blot testing of human kidney lys...

Dilution Range

Immunohistochemistry (FFPE): 0.1-0.2ug/ml, Western blot: 1-2ug/ml

Expiration Date

12 months from date of receipt.