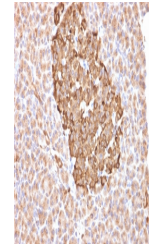


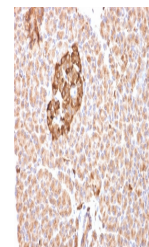
## Product Datasheet

### FTH1 Antibody / Ferritin heavy chain (orb639668)

<b>Description</b>	Mammalian ferritins consist of 24 subunits made up of 2 types of poly-peptide chains, ferritin heavy...
<b>Species/Host</b>	Mouse
<b>Reactivity</b>	Human
<b>Conjugation</b>	Unconjugated
<b>Tested Applications</b>	IHC-P, WB
<b>Immunogen</b>	A human recombinant partial protein (amino acids 58-180) were used as the immunogen for the FTH1 antibody.
<b>Preservatives</b>	0.2 mg/ml with 0.1 mg/ml rAlbumin (US sourced), 0.05% sodium azide
<b>Storage</b>	Store the FTH1 antibody at 2-8°C (with azide) or aliquot and store at -20°C or colder (without azide).
<b>Note</b>	For research use only
<b>Application notes</b>	Optimal dilution of the antibody should be determined by the researcher.
<b>Formula</b>	0.2 mg/ml with 0.1 mg/ml BSA (US sourced), 0.05% sodium azide
<b>Isotype</b>	Mouse IgG2c, kappa
<b>Clonality</b>	Monoclonal
<b>Purity</b>	Protein G affinity chromatography
<b>Uniprot ID</b>	<b>P02794</b>
<b>Hazard Information</b>	This FTH1 antibody is available for research use only.
<b>Dilution Range</b>	Western blot: 1-2ug/ml, Immunohistochemistry (FFPE): 0.1-0.2ug/ml
<b>Expiration Date</b>	12 months from date of receipt.



IHC staining of FFPE human pancreas with...



IHC staining of FFPE human pancreas with...



Western blot testing of human HeLa cell ...