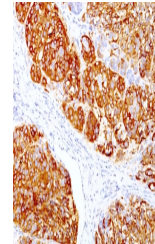


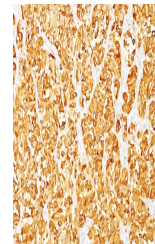
Product Datasheet

MART-1 / Melan-A Antibody (orb639657)

Description	This antibody cocktail recognizes a protein doublet of 20-22kDa, identified as MART-1 (Melanoma Anti...
Species/Host	Mouse
Reactivity	Human
Conjugation	Unconjugated
Tested Applications	IHC-P
Immunogen	Recombinant human protein was used as the immunogen for the MART-1 antibody cocktail.
Preservatives	0.2 mg/ml with 0.1 mg/ml rAlbumin (US sourced), 0.05% sodium azide
Storage	Store the MART-1 antibody cocktail at 2-8°C (with azide) or aliquot and store at -20°C or colder (without azide).
Note	For research use only
Application notes	Optimal dilution of the antibody should be determined by the researcher.
Formula	0.2 mg/ml with 0.1 mg/ml BSA (US sourced), 0.05% sodium azide
Isotype	Mouse IgG2b
Clonality	Monoclonal
Purity	Protein G affinity chromatography
Uniprot ID	Q16655
Hazard Information	This MART-1 antibody cocktail is available for research use only.
Dilution Range	Immunohistochemistry (FFPE): 1-2ug/ml
Expiration Date	12 months from date of receipt.



IHC staining of FFPE human melanoma with...



IHC staining of FFPE human melanoma with...