
Product Datasheet

ALDH1A1 Antibody / Acetaldehyde dehydrogenase 1 (orb639650)

Description

ALDH1A1 belongs to the ALDH enzymes, a family of

is...

Species/Host

Mouse

Reactivity

Human

Conjugation

Unconjugated

Tested Applications

IHC-P, WB

Immunogen

A human recombinant partial ALDH1A1 protein (AA 315-434) was used as the immunogen for this ALDH1 antibody.

Preservatives

0.2 mg/ml with 0.1 mg/ml rAlbumin (US sourced), 0.05% sodium azide

Storage

Store the ALDH1A1 antibody at 2-8°C (with azide) or aliquot and store at -20°C or colder (without azide).

Note

For research use only

Application notes

Optimal dilution of the antibody should be determined by the researcher.

Formula

0.2 mg/ml with 0.1 mg/ml BSA (US sourced), 0.05% sodium azide

Isotype

Mouse IgG1, kappa

Clonality

Monoclonal

Purity

Protein G affinity chromatography

Uniprot ID

P00352

Hazard Information

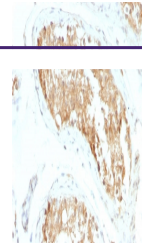
This ALDH1A1 antibody is available for research use only.

Dilution Range

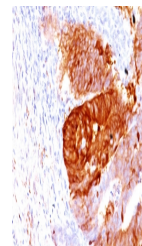
Western blot: 1-2ug/ml, Immunohistochemistry (FFPE): 1-2ug/ml

Expiration Date

12 months from date of receipt.



IHC staining of FFPE human testicular carcinoma tissue.



IHC staining of FFPE human colon carcinoma tissue.



Western blot testing of human liver lysate.