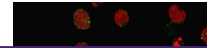

Product Datasheet

CD21 Antibody (orb639640)

Description

Recognizes a protein of 140kDa, which is identified as the


Species/Host

Rabbit

Reactivity

Human

Conjugation

Unconjugated

Tested Applications

FACS, IF, IHC-P, WB

Immunogen

A partial protein corresponding to amino acids 142-240 was used as the immunogen for the recombinant CD21 antibody.

Preservatives

0.2 mg/ml with 0.1 mg/ml rAlbumin (US sourced), 0.05% sodium azide

Storage

Store the recombinant CD21 antibody at 2-8°C (with azide) or aliquot and store at -20°C or colder (without azide).

Note

For research use only

Application notes

Optimal dilution of the antibody should be determined by the researcher.

Formula

0.2 mg/ml with 0.1 mg/ml BSA (US sourced), 0.05% sodium azide

Isotype

Rabbit IgG

Clonality

Recombinant

Purity

Protein A affinity chromatography

Uniprot ID

P20023

Hazard Information

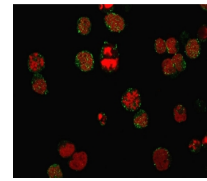
This recombinant CD21 antibody is available for research use only.

Dilution Range

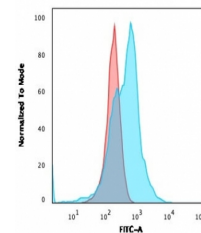
Flow cytometry: 1-2ug/million cells in 0.1ml, Immunofluorescence: 1-2ug/ml, Western blot: 1-2ug/ml, Immunohistochemistry (FFPE): 1-2ug/ml

Expiration Date

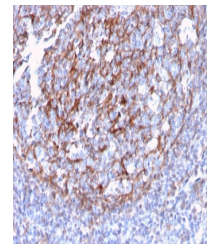
12 months from date of receipt.



Immunofluorescent staining of PFA-fixed ...



Flow cytometry testing of PFA-fixed huma...



IHC staining of FFPE human tonsil with r...