
Product Datasheet

**Folate Hydrolase 1 Antibody / FOLH1 / PSMA
(orb639639)**

Description

Folate hydrolase 1 (FOLH1), also known as Prostate-


Species/Host

Rabbit

Reactivity

Human

Conjugation

Unconjugated

Tested Applications

IHC-P

IHC testing of FFPE human prostate cancer...

Immunogen

A portion of amino acids 232-433 from the human protein were used as the immunogen for this recombinant FOLH1 antibody.

Preservatives

0.2 mg/ml with 0.1 mg/ml rAlbumin (US sourced), 0.05% sodium azide

Storage

Store the recombinant FOLH1 antibody at 2-8°C (with azide) or aliquot and store at -20°C or colder (without azide).

Note

For research use only

Application notes

Optimal dilution of the antibody should be determined by the researcher.

Formula

0.2 mg/ml with 0.1 mg/ml BSA (US sourced), 0.05% sodium azide

Isotype

Rabbit IgG

Clonality

Recombinant

Purity

Protein A affinity chromatography

Uniprot ID
[Q04609](#)
Hazard Information

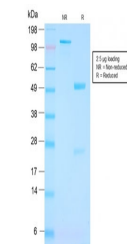
This recombinant FOLH1 antibody is available for research use only.

Dilution Range

Immunohistochemistry (FFPE): 1-2ug/ml

Expiration Date

12 months from date of receipt.



SDS-PAGE analysis of purified, BSA-free ...