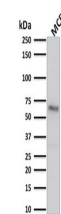


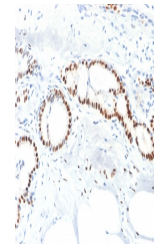
Product Datasheet

Estrogen Receptor alpha Antibody (orb639636)

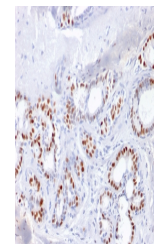
Description	This monoclonal antibody is specific to estrogen receptor alpha (ER alpha) and shows minimal cross-r...
Species/Host	Mouse
Reactivity	Human
Conjugation	Unconjugated
Tested Applications	IHC-P, WB
Immunogen	Recombinant human full length protein was used as the immunogen for this Estrogen Receptor alpha antibody.
Preservatives	0.2 mg/ml with 0.1 mg/ml rAlbumin (US sourced), 0.05% sodium azide
Storage	Store the Estrogen Receptor alpha antibody at 2-8°C (with azide) or aliquot and store at -20°C or colder (without azide).
Note	For research use only
Application notes	Optimal dilution of the antibody should be determined by the researcher.
Formula	0.2 mg/ml with 0.1 mg/ml BSA (US sourced), 0.05% sodium azide
Isotype	Mouse IgG2a, kappa
Clonality	Monoclonal
Purity	Protein G affinity chromatography
Uniprot ID	P03372
Hazard Information	This Estrogen Receptor alpha antibody is available for research use only.
Dilution Range	Western blot: 1-2ug/ml, Immunohistochemistry (FFPE): 1-2ug/ml
Expiration Date	12 months from date of receipt.



Western blot testing of human MCF7 cell ...



IHC staining of FFPE human breast carcin...



IHC staining of FFPE human breast carcin...