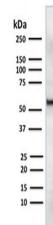


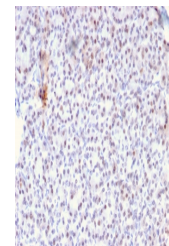
Product Datasheet

AKT1 Antibody (orb639633)

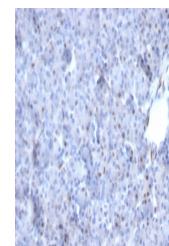
Description	Recognizes a protein of 62kDa, which is identified as AKT1. The serine/threonine kinase Akt family c...
Species/Host	Mouse
Reactivity	Human
Conjugation	Unconjugated
Tested Applications	IHC-P, WB
Immunogen	Amino acids 85-189 from the human protein were used as the immunogen for the AKT1 antibody.
Preservatives	0.2 mg/ml with 0.1 mg/ml rAlbumin (US sourced), 0.05% sodium azide
Storage	Store the AKT1 antibody at 2-8°C (with azide) or aliquot and store at -20°C or colder (without azide).
Note	For research use only
Application notes	Optimal dilution of the antibody should be determined by the researcher.
Formula	0.2 mg/ml with 0.1 mg/ml BSA (US sourced), 0.05% sodium azide
Isotype	Mouse IgG
Clonality	Monoclonal
Purity	Protein G affinity chromatography
Uniprot ID	P31749
Hazard Information	This AKT1 antibody is available for research use only.
Dilution Range	Western blot: 1-2ug/ml, Immunohistochemistry (FFPE): 1-2ug/ml
Expiration Date	12 months from date of receipt.



Western blot testing of mouse NIH3T3 cel...



IHC staining of FFPE human pancreas with...



IHC staining of FFPE human pancreas with...