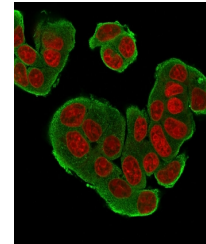


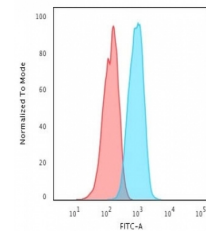
## Product Datasheet

### ERBB4 Antibody / HER4 (orb639632)

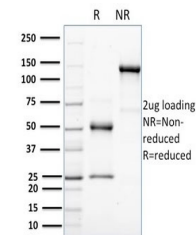
<b>Description</b>	The EGF receptor family comprises several related receptor tyrosine kinases that are frequently over...
<b>Species/Host</b>	Mouse
<b>Reactivity</b>	Human
<b>Conjugation</b>	Unconjugated
<b>Tested Applications</b>	FACS, IF
<b>Immunogen</b>	A recombinant human partial protein (amino acids 1116-1269) was used as the immunogen for the HER-4 antibody.
<b>Preservatives</b>	0.2 mg/ml with 0.1 mg/ml rAlbumin (US sourced), 0.05% sodium azide
<b>Storage</b>	Store the HER-4 antibody at 2-8°C (with azide) or aliquot and store at -20°C or colder (without azide).
<b>Note</b>	For research use only
<b>Application notes</b>	Optimal dilution of the antibody should be determined by the researcher.
<b>Formula</b>	0.2 mg/ml with 0.1 mg/ml BSA (US sourced), 0.05% sodium azide
<b>Isotype</b>	Mouse IgG2b, kappa
<b>Clonality</b>	Monoclonal
<b>Purity</b>	Protein G affinity chromatography
<b>Uniprot ID</b>	<a href="#">Q15303</a>
<b>Hazard Information</b>	This HER-4 antibody is available for research use only.
<b>Dilution Range</b>	Flow cytometry: 1-2ug/million cells in 0.1ml, Immunofluorescence: 1-2ug/ml
<b>Expiration Date</b>	12 months from date of receipt.



Immunofluorescent staining of permeabilized...



Flow cytometry testing of PFA-fixed huma...



SDS-PAGE analysis of purified, BSA-free ...