
Product Datasheet

**Folate Hydrolase 1 Antibody / FOLH1 / PSMA
(orb639630)**

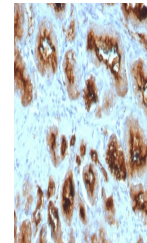
Description

Folate hydrolase 1 (FOLH1), also known as Prostate-

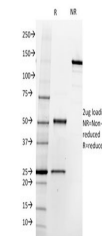
Species/Host	Mouse
Reactivity	Human
Conjugation	Unconjugated
Tested Applications	IHC-P, WB
Immunogen	A portion of amino acids 232-433 from the human protein was used as the immunogen for this Folate Hydrolase 1 antibody.
Preservatives	0.2 mg/ml with 0.1 mg/ml rAlbumin (US sourced), 0.05% sodium azide
Storage	Store the Folate Hydrolase 1 antibody at 2-8°C (with azide) or aliquot and store at -20°C or colder (without azide).
Note	For research use only
Application notes	Optimal dilution of the antibody should be determined by the researcher.
Formula	0.2 mg/ml with 0.1 mg/ml BSA (US sourced), 0.05% sodium azide
Isotype	Mouse IgG2b, kappa
Clonality	Monoclonal
Purity	Protein G affinity chromatography
Uniprot ID	Q04609
Hazard Information	This Folate Hydrolase 1 antibody is available for research use only.
Dilution Range	Western blot: 1-2ug/ml, Immunohistochemistry (FFPE): 1-2ug/ml
Expiration Date	12 months from date of receipt.



Western blot testing of human LNCaP cell...



IHC testing of FFPE human prostate cancer...



SDS-PAGE analysis of purified, BSA-free ...