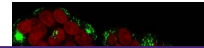

Product Datasheet

CTSD Antibody / Cathepsin D (orb639629)

Description

Cathepsin D is a ubiquitously expressed lysosomal


Species/Host

Mouse

Reactivity

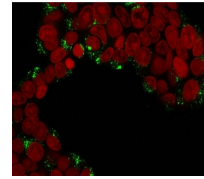
Human

Conjugation

Unconjugated

Tested Applications

IF, IHC-P, WB



Immunofluorescent staining of permeabilized cells

Immunogen

A recombinant human partial protein (amino acids 104-250) was used as the immunogen of the Cathepsin D antibody.

Preservatives

0.2 mg/ml with 0.1 mg/ml rAlbumin (US sourced), 0.05% sodium azide

Storage

Store the Cathepsin D antibody at 2-8°C (with azide) or aliquot and store at -20°C or colder (without azide).

Note

For research use only

Application notes

Optimal dilution of the antibody should be determined by the researcher.

Formula

0.2 mg/ml with 0.1 mg/ml BSA (US sourced), 0.05% sodium azide

Isotype

Mouse IgG2b, kappa

Clonality

Monoclonal

Purity

Protein G affinity chromatography

Uniprot ID

P07339

Hazard Information

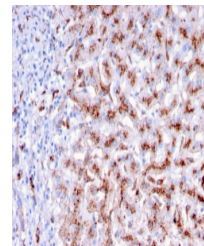
This Cathepsin D antibody is available for research use only.

Dilution Range

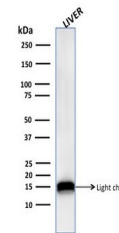
Immunofluorescence: 1-2ug/ml, Immunohistochemistry (FFPE): 1-2ug/ml, Western blot: 1-2ug/ml

Expiration Date

12 months from date of receipt.



IHC staining of FFPE human liver with Ca...



Western blot testing of human liver lysa...