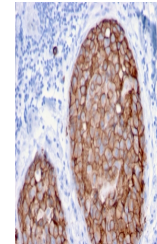


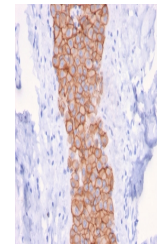
Product Datasheet

HER2 Antibody / ErbB2 (orb639628)

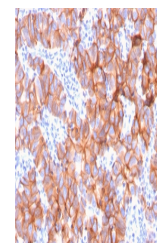
| | |
|----------------------------|---|
| Description | Recognizes a protein of 185kDa, which is identified as c-erbB-2/HER-2/neu. Its epitope is localized ... |
| Species/Host | Mouse |
| Reactivity | Human |
| Conjugation | Unconjugated |
| Tested Applications | IHC-P |
| Immunogen | A recombinant human HER2 protein fragment within amino acids 311-462 was used as the immunogen for the HER2 antibody. Its epitope is localized in the extracellular domain. |
| Preservatives | 0.2 mg/ml with 0.1 mg/ml rAlbumin (US sourced), 0.05% sodium azide |
| Storage | Store the HER2 antibody at 2-8°C (with azide) or aliquot and store at -20°C or colder (without azide). |
| Note | For research use only |
| Application notes | Optimal dilution of the antibody should be determined by the researcher. |
| Formula | 0.2 mg/ml with 0.1 mg/ml BSA (US sourced), 0.05% sodium azide |
| Isotype | Mouse IgG2b, kappa |
| Clonality | Monoclonal |
| Purity | Protein G affinity chromatography |
| Uniprot ID | P04626 |
| Hazard Information | This HER2 antibody is available for research use only. |
| Dilution Range | Immunohistochemistry (FFPE): 1-2ug/ml |
| Expiration Date | 12 months from date of receipt. |



IHC staining of FFPE human breast carcin...



IHC staining of FFPE human breast carcin...



IHC staining of FFPE human breast carcin...