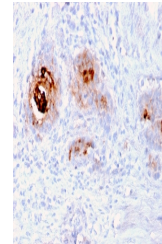


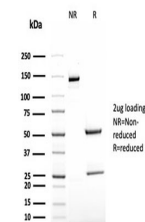
## Product Datasheet

### TAG-72 Antibody (orb639619)

<b>Description</b>	This antibody recognizes an oncofetal antigen of 220kDa, identified as a tumor-associated glycoprote...
<b>Species/Host</b>	Mouse
<b>Reactivity</b>	Human
<b>Conjugation</b>	Unconjugated
<b>Tested Applications</b>	IHC-P
<b>Immunogen</b>	The membrane-enriched fraction of a human breast carcinoma liver metastasis was used as the immunogen for this recombinant TAG-72 antibody.
<b>Preservatives</b>	0.2 mg/ml with 0.1 mg/ml rAlbumin (US sourced), 0.05% sodium azide
<b>Storage</b>	Store the recombinant TAG-72 antibody at 2-8°C (with azide) or aliquot and store at -20°C or colder (without azide).
<b>Note</b>	For research use only
<b>Application notes</b>	Optimal dilution of the antibody should be determined by the researcher.
<b>Formula</b>	0.2 mg/ml with 0.1 mg/ml BSA (US sourced), 0.05% sodium azide
<b>Isotype</b>	Mouse IgG1, kappa
<b>Clonality</b>	Recombinant
<b>Purity</b>	Protein G affinity chromatography
<b>Hazard Information</b>	This recombinant TAG-72 antibody is available for research use only.
<b>Entrez</b>	<b>182875</b>
<b>Dilution Range</b>	Immunohistochemistry (FFPE): 1-2ug/ml
<b>Expiration Date</b>	12 months from date of receipt.



IHC staining of human breast carcinoma W...



SDS-PAGE analysis of purified, BSA-free ...