

Product Datasheet

Cathepsin K Antibody / CTSK (orb639610)

Description The protein encoded by this gene is a lysosomal cysteine proteinase involved in bone remodeling and ...

Species/Host Mouse

Reactivity Human

Conjugation Unconjugated

Tested Applications IHC-P

Immunogen A recombinant human partial protein (amino acids 163-274) was used as the immunogen for the Cathepsin K antibody.

Preservatives 0.2 mg/ml with 0.1 mg/ml rAlbumin (US sourced), 0.05% sodium azide

Storage Store the Cathepsin K antibody at 2-8°C (with azide) or aliquot and store at -20°C or colder (without azide).

Note For research use only

Application notes Optimal dilution of the antibody should be determined by the researcher.

Formula 0.2 mg/ml with 0.1 mg/ml BSA (US sourced), 0.05% sodium azide

Isotype Mouse IgG1, kappa

Clonality Monoclonal

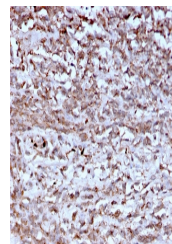
Purity Protein G affinity chromatography

Uniprot ID **P43235**

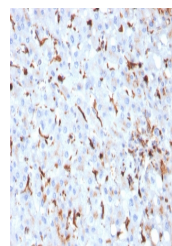
Hazard Information This Cathepsin K antibody is available for research use only.

Dilution Range Immunohistochemistry (FFPE): 1-2ug/ml

Expiration Date 12 months from date of receipt.

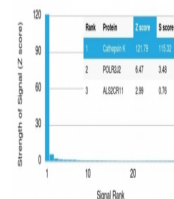


IHC staining of FFPE human hepatocellular carcinoma tissue.



IHC staining of FFPE human liver with Cathepsin K antibody.

Human Protein Microarray Specificity Validation



Analysis of HuProt (TM) microarray containing Cathepsin K.