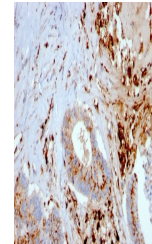


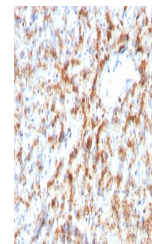
## Product Datasheet

### CTSD Antibody / Cathepsin D (orb639607)

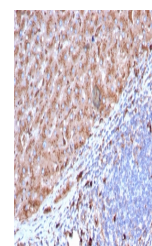
<b>Description</b>	Cathepsin D is a ubiquitously expressed lysosomal aspartyl protease involved in the normal degradati...
<b>Species/Host</b>	Mouse
<b>Reactivity</b>	Human
<b>Conjugation</b>	Unconjugated
<b>Tested Applications</b>	IHC-P, WB
<b>Immunogen</b>	A recombinant human partial protein (amino acids 104-250) was used as the immunogen of the Cathepsin D antibody.
<b>Preservatives</b>	0.2 mg/ml with 0.1 mg/ml rAlbumin (US sourced), 0.05% sodium azide
<b>Storage</b>	Store the Cathepsin D antibody at 2-8°C (with azide) or aliquot and store at -20°C or colder (without azide).
<b>Note</b>	For research use only
<b>Application notes</b>	Optimal dilution of the antibody should be determined by the researcher.
<b>Formula</b>	0.2 mg/ml with 0.1 mg/ml BSA (US sourced), 0.05% sodium azide
<b>Isotype</b>	Mouse IgG2b, kappa
<b>Clonality</b>	Monoclonal
<b>Purity</b>	Protein G affinity chromatography
<b>Uniprot ID</b>	<b>P07339</b>
<b>Hazard Information</b>	This Cathepsin D antibody is available for research use only.
<b>Dilution Range</b>	Immunohistochemistry (FFPE): 1-2ug/ml,Western blot: 1-2ug/ml
<b>Expiration Date</b>	12 months from date of receipt.



IHC staining of FFPE human liver carcino...



IHC staining of FFPE human liver with Ca...



IHC staining of FFPE human liver with Ca...