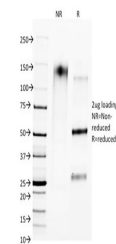


Product Datasheet

CTLA-4 Antibody / CD152 (orb639605)

Description	This CTLA4 antibody is specific to the soluble form of the protein. CTLA4 (CD152) is a cell surface ...
Species/Host	Mouse
Reactivity	Mouse, Rat
Conjugation	Unconjugated
Tested Applications	WB
Immunogen	Amino acids CENAPNRARM were used as the immunogen for the CTLA4 antibody.
Preservatives	0.2 mg/ml with 0.1 mg/ml rAlbumin (US sourced), 0.05% sodium azide
Storage	Store the CTLA4 antibody at 2-8°C (with azide) or aliquot and store at -20°C or colder (without azide).
Note	For research use only
Application notes	Optimal dilution of the antibody should be determined by the researcher.
Formula	0.2 mg/ml with 0.1 mg/ml BSA (US sourced), 0.05% sodium azide
Isotype	Mouse IgG1, kappa
Clonality	Monoclonal
Purity	Protein G affinity chromatography
Uniprot ID	P16410
Hazard Information	This CTLA4 antibody is available for research use only.
Dilution Range	Western blot: 1-2ug/ml
Expiration Date	12 months from date of receipt.



SDS-PAGE analysis of purified, BSA-free ...