
Product Datasheet

Carboxypeptidase A1 Antibody / CPA1 (orb639597)

Description

Human pancreatic procarboxypeptidase A exists as


Species/Host

Mouse

Reactivity

Human

Conjugation

Unconjugated

Tested Applications

IHC-P, WB

Immunogen

Full length recombinant human protein was used as the immunogen for the Carboxypeptidase A1 antibody.

Preservatives

0.2 mg/ml with 0.1 mg/ml rAlbumin (US sourced), 0.05% sodium azide

Storage

Store the Carboxypeptidase A1 antibody at 2-8°C (with azide) or aliquot and store at -20°C or colder (without azide).

Note

For research use only

Application notes

Optimal dilution of the antibody should be determined by the researcher.

Formula

0.2 mg/ml with 0.1 mg/ml BSA (US sourced), 0.05% sodium azide

Isotype

Mouse IgG1, kappa

Clonality

Monoclonal

Purity

Protein G affinity chromatography

Uniprot ID
P15085
Hazard Information

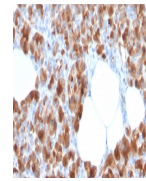
This Carboxypeptidase A1 antibody is available for research use only.

Dilution Range

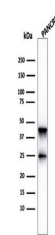
Immunohistochemistry (FFPE): 1-2ug/ml, Western blot: 1-2ug/ml

Expiration Date

12 months from date of receipt.

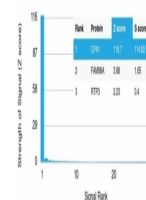


IHC staining of FFPE human pancreas with...



Western blot testing of human pancreas I...

Human Protein Microarray Specificity Validation



Analysis of HuProt (TM) microarray conta...