
Product Datasheet

Carboxypeptidase A1 Antibody / CPA1 (orb639596)

Description

Human pancreatic procarboxypeptidase A exists as


Species/Host

Mouse

Reactivity

Human

Conjugation

Unconjugated

Tested Applications

IHC-P, WB

IHC staining of FFPE human pancreas with...

Immunogen

Full length recombinant human Carboxypeptidase A1 protein was used as the immunogen for the CPA1 antibody.

Preservatives

0.2 mg/ml with 0.1 mg/ml rAlbumin (US sourced), 0.05% sodium azide

Storage

Store the Carboxypeptidase A1 antibody at 2-8°C (with azide) or aliquot and store at -20°C or colder (without azide).

Note

For research use only

Application notes

Optimal dilution of the antibody should be determined by the researcher.

IHC staining of FFPE human pancreas with...

Formula

0.2 mg/ml with 0.1 mg/ml BSA (US sourced), 0.05% sodium azide

Isotype

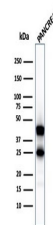
Mouse IgG1, kappa

Clonality

Monoclonal

Purity

Protein G affinity chromatography

Uniprot ID
P15085

Hazard Information

This Carboxypeptidase A1 antibody is available for research use only.

Western blot testing of human pancreas I...

Dilution Range

Immunohistochemistry (FFPE): 1-2ug/ml, Western blot: 1-2ug/ml

Expiration Date

12 months from date of receipt.