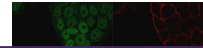

Product Datasheet

CHD4 Antibody / Chromodomain helicase DNA binding protein 4 (orb639584)

Description

CHD4/Mi-2b is a component of the nucleosome



which is a mul...

Species/Host

Mouse

Reactivity

Human, Mouse

Conjugation

Unconjugated

Tested Applications

ELISA, IF, IHC-P, WB

Immunofluorescent staining of permeabilized cells.

Immunogen

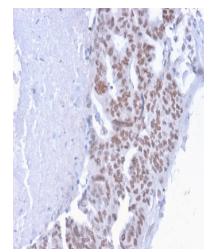
Amino acids ASGLGSPSPCSAGSEEDM and CSRLANRAPEPPPQVAQQQ were used as the immunogen for the CHD4 antibody.

Preservatives

0.2 mg/ml with 0.1 mg/ml rAlbumin (US sourced), 0.05% sodium azide

Storage

Store the CHD4 antibody at 2-8°C (with azide) or aliquot and store at -20°C or colder (without azide).



IHC staining of FFPE human breast carcinoma tissue.

Note

For research use only

Application notes

Optimal dilution of the antibody should be determined by the researcher.

Formula

0.2 mg/ml with 0.1 mg/ml BSA (US sourced), 0.05% sodium azide

Isotype

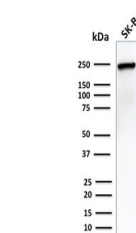
Mouse IgG2a, kappa

Clonality

Monoclonal

Purity

Protein G affinity chromatography



Western blot testing of human SK-BR-3 cells.

Uniprot ID

[Q14839](#)

Hazard Information

This CHD4 antibody is available for research use only.

Dilution Range

ELISA (order BSA-free format for coating), Western blot: 1-2 µg/ml, Immunofluorescence: 1-2 µg/ml, Immunohistochemistry (FFPE): 1-2 µg/ml

Expiration Date

12 months from date of receipt.