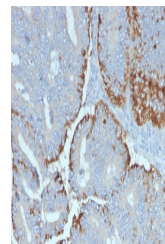


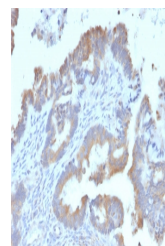
Product Datasheet

ATG5 Antibody (orb639549)

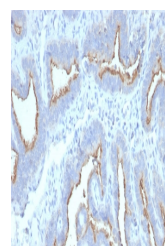
Description	The protein encoded by this gene, in combination with autophagy protein 12, functions as an E1-like ...
Species/Host	Mouse
Reactivity	Human
Conjugation	Unconjugated
Tested Applications	ELISA, IHC-P, WB
Immunogen	A recombinant human partial protein (amino acids 1-119) was used as the immunogen for the ATG5 antibody.
Preservatives	0.2 mg/ml with 0.1 mg/ml rAlbumin (US sourced), 0.05% sodium azide
Storage	Store the ATG5 antibody at 2-8°C (with azide) or aliquot and store at -20°C or colder (without azide).
Note	For research use only
Application notes	Optimal dilution of the antibody should be determined by the researcher.
Formula	0.2 mg/ml with 0.1 mg/ml BSA (US sourced), 0.05% sodium azide
Isotype	Mouse IgG1, kappa
Clonality	Monoclonal
Purity	Protein G affinity chromatography
Uniprot ID	Q9H1Y0
Hazard Information	This ATG5 antibody is available for research use only.
Dilution Range	ELISA (order BSA-free format for coating),Western blot: 1-2ug/ml,Immunohistochemistry (FFPE): 1-2ug/ml
Expiration Date	12 months from date of receipt.



IHC staining of FFPE human colon carcinoma...



IHC staining of FFPE human endometrial carcinoma...



IHC staining of FFPE human ovarian carcinoma...