
Product Datasheet

RORC Antibody (orb639539)

Description

This MAb recognizes a protein of 63kDa, identified as


Species/Host

Mouse

Reactivity

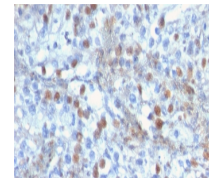
Human

Conjugation

Unconjugated

Tested Applications

FACS, IF, IHC-P



IHC staining of FFPE human kidney with RORC antibody

Immunogen

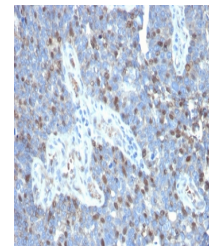
Recombinant human RORC protein was used as the immunogen for the RORC antibody. The epitope has been found to be with amino acids 1-50.

Preservatives

0.2 mg/ml with 0.1 mg/ml rAlbumin (US sourced), 0.05% sodium azide

Storage

Store the RORC antibody at 2-8°C (with azide) or aliquot and store at -20°C or colder (without azide).



IHC staining of FFPE human colon carcinoma with RORC antibody

Note

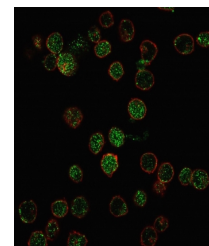
For research use only

Application notes

Optimal dilution of the RORC antibody should be determined by the researcher.1. The prediluted format is supplied in a dropper bottle and is optimized for use in IHC. After epitope retrieval step (if required), drip mAb solution onto the tissue section and incubate at RT for 30 min.

Formula

0.2 mg/ml with 0.1 mg/ml BSA (US sourced), 0.05% sodium azide



Immunofluorescence staining of PFA-fixed cells with RORC antibody

Isotype

Mouse IgG2a, kappa

Clonality

Monoclonal

Purity

Protein G affinity chromatography

Uniprot ID

[P51449](#)

Hazard Information

This RORC antibody is available for research use only.

Dilution Range

Flow cytometry: 1-2ug/million cells, Immunofluorescence: 1-2ug/ml, Immunohistochemistry (FFPE): 1-2ug/ml for 30 minutes at RT, Prediluted IHC only format: incubate for 30 min at RT (1)

Expiration Date

12 months from date of receipt.