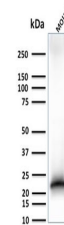


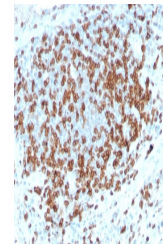
Product Datasheet

CD3 epsilon Antibody (orb639538)

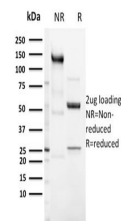
Description	Recognizes the epsilon-chain of CD3, which consists of five different polypeptide chains (designated...
Species/Host	Rabbit
Reactivity	Human
Conjugation	Unconjugated
Tested Applications	ELISA, IHC-P, WB
Immunogen	A recombinant human partial protein (amino acids 23-119) was used as the immunogen for the recombinant CD3e antibody.
Preservatives	0.2 mg/ml with 0.1 mg/ml rAlbumin (US sourced), 0.05% sodium azide
Storage	Store the recombinant CD3e antibody at 2-8°C (with azide) or aliquot and store at -20°C or colder (without azide).
Note	For research use only
Application notes	Optimal dilution of the recombinant CD3e antibody should be determined by the researcher.
Formula	0.2 mg/ml with 0.1 mg/ml BSA (US sourced), 0.05% sodium azide
Isotype	Rabbit IgG
Clonality	Recombinant
Purity	Protein A affinity chromatography
Uniprot ID	P07766
Hazard Information	This recombinant CD3e antibody is available for research use only.
Dilution Range	ELISA (order BSA-free format for coating), Western blot: 1-2ug/ml, Immunohistochemistry (FFPE): 1-2ug/ml
Expiration Date	12 months from date of receipt.



Western blot testing of human MOLT-4 cel...



IHC staining of FFPE human tonsil with r...



SDS-PAGE analysis of purified, BSA-free ...