
Product Datasheet

**ACTN2 Antibody / Alpha Actinin 2 / Sarcomeric
Alpha Actinin (orb639536)**

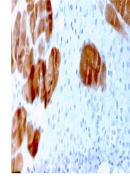
Description

Alpha actinins belong to the spectrin gene



Species/Host Mouse

cytoskele...



Reactivity Human

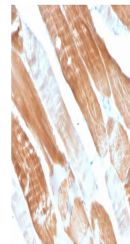
Conjugation Unconjugated

Tested Applications IHC-P

IHC staining of FFPE human skeletal muscul...

Immunogen Amino acids 557-692 from the human protein were used as the immunogen for this ACTN2 antibody.

Preservatives 0.2 mg/ml with 0.1 mg/ml rAlbumin (US sourced), 0.05% sodium azide



Storage Store the ACTN2 antibody at 2-8°C (with azide) or aliquot and store at -20°C or colder (without azide).

Note For research use only

Application notes Optimal dilution of the ACTN2 antibody should be determined by the researcher.

IHC staining of FFPE human skeletal muscul...

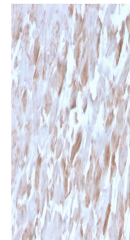
Formula 0.2 mg/ml with 0.1 mg/ml BSA (US sourced), 0.05% sodium azide

Isotype Mouse IgG1, kappa

Clonality Monoclonal

Purity Protein G affinity chromatography

Uniprot ID [P35609](#)



Hazard Information This ACTN2 antibody is available for research use only.

IHC staining of FFPE human cardiac muscul...

Dilution Range Immunohistochemistry (FFPE): 1-2ug/ml

Expiration Date 12 months from date of receipt.