
Product Datasheet

ALDH1A1 Antibody / Acetaldehyde dehydrogenase 1 (orb639525)

Description

ALDH1A1 belongs to the ALDH enzymes, a family of

is...

Species/Host

Mouse

Reactivity

Human

Conjugation

Unconjugated

Tested Applications

IHC-P, WB

Immunogen

A human recombinant partial ALDH1A1 protein (AA 315-434) was used as the immunogen for this ALDH1 antibody.

Preservatives

0.2 mg/ml in 1X PBS with 0.1 mg/ml rAlbumin (US sourced) and 0.05% sodium azide

Storage

The ALDH1 antibody (with azide) can be stored at 2-8°C. The azide-free format should be aliquoted and stored at -20°C or colder.

Note

For research use only

Application notes

Titering of the ALDH1 antibody may be required for optimal performance.1. FFPE testing requires sections to be boiled in pH6 10mM citrate buffer for 10-20 minutes, followed by cooling at RT for 20 minutes, prior to staining.

Formula

0.2 mg/ml in 1X PBS with 0.1 mg/ml BSA (US sourced) and 0.05% sodium azide

Isotype

Mouse IgG1, kappa

Clonality

Monoclonal

Purity

Protein G affinity chromatography

Uniprot ID

P00352

Hazard Information

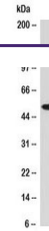
This ALDH1 antibody is available for research use only.

Dilution Range

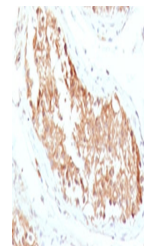
Western blot: 1-2ug/ml, Immunohistochemistry (FFPE): 0.5-1ug/ml

Expiration Date

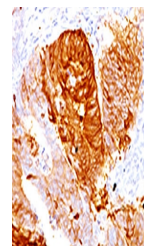
12 months from date of receipt.



Western blot testing of human K562 cell ...



IHC testing of FFPE human testicular car...



IHC testing of FFPE human colon carcinom...